



Crawler cranes

**SENEBOGEN**

**LIFTING  
LARGE  
LOADS  
SAFELY**



**CRAWLER CRANES**

 50 – 300 t

# CONTENTS



## OUR CRAWLER CRANES

The design of the SENNEBOGEN crawler crane provides a wide range of benefits in a variety of activities and applications.

**04** APPLICATIONS >

**10** BENEFITS OF  
SENNEBOGEN  
CRAWLER CRANES >

**18** PRODUCT OVERVIEW >

**46** ABOUT SENNEBOGEN >

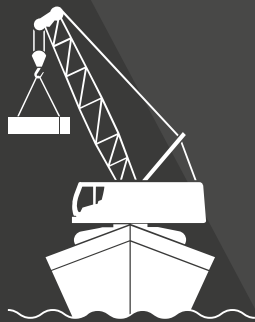
**50** SERVICE AND TRAINING >



The right  
machine  
for every  
application



# OFFSHORE & PORTS



- /// On board assembly and loading work
- /// Port logistics, ship loading and unloading
- /// Special applications

Offshore and port cranes are exposed to the harshest of environments. Our cranes are specifically tailored for offshore use and meet stricter safety regulations: offshore load charts in the LMI specially adapted to the ship, seawater-resistant paint and the attachment of additional ballast ensure, among other things, that operations on deck are safe and reliable.

# WIND POWER



- Service crane
- Maintenance work

The construction of wind farms is logistically challenging and requires auxiliary cranes that are extremely mobile and have a high load capacity. Our cranes impress with their ease of transportation and in Pick and Carry applications, where they can move whilst carrying up to 100% of the maximum load capacity.

# BRIDGE CONSTRUCTION



- /// Precise lifting of the heaviest loads
- /// Traveling with loads of up to 100 %

Our cranes offer the perfect combination of power and mobility for complex projects in new or replacement bridge construction. They move safely under load, carry out fast and effective lifting operations and offer outstanding stability thanks to wide-gauge undercarriages – qualities that impress in any infrastructure project.

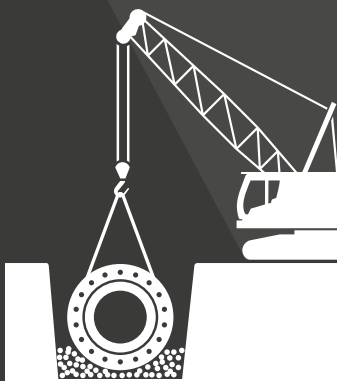
# ASSEMBLY WORK



- Working on narrow construction sites and excavations
- Pick and Carry tasks
- Precise positioning of components

The demands placed on the cranes that move the components are just as varied as the construction applications. Our cranes move across challenging ground conditions without the need for disassembly. Thanks to Pick and Carry, components can be unloaded from the transport frame and assembled on the structure in one movement.

# STANDARD AND SPECIALIZED CIVIL ENGINEERING

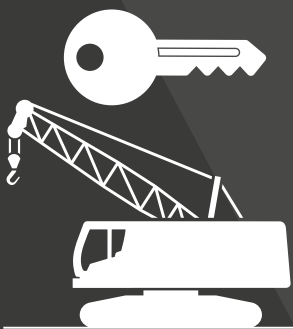


- /// Sheet pile installation and dismantling
- /// Drilling and leader operations

SENNEBOGEN cranes are the be-all and end-all when it comes to specialized civil engineering. They are optimized for cost-effective transport and can be configured to customer specifications, tailored to the respective attachment in collaboration with the attachment manufacturers. The powerful hydraulics, and large-scale pipes and valves ensure the best efficiency.



# RENTAL

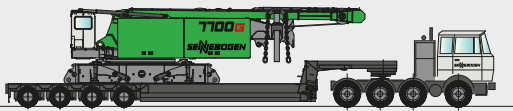


- Optimized for transport
- Ready to be put into operation
- Long service life and value retention

Crane rental companies particularly appreciate the very low total costs of ownership of SENNEBOGEN crawler cranes, thanks to their optimization for easy and cost-effective transport, flexibility on the construction site, as well as reliability and value retention, even after many years of heavy use.

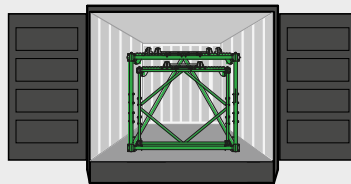
# 01 ECONOMICAL TRANSPORTATION

It is not just with procurement and operating costs that companies can make cost savings. Astute contractors know that simple and economical transportation between construction sites is an important factor, too.



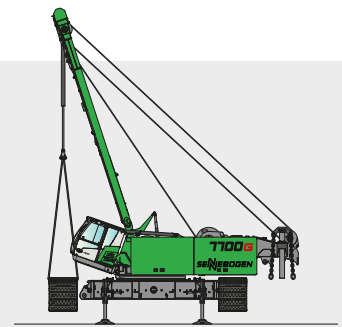
## Compact

Low transport widths and weights guarantee cost-effective transport.



## Cost-efficient

All attachments and lattice mast segments are optimized for container transport.



## Independent

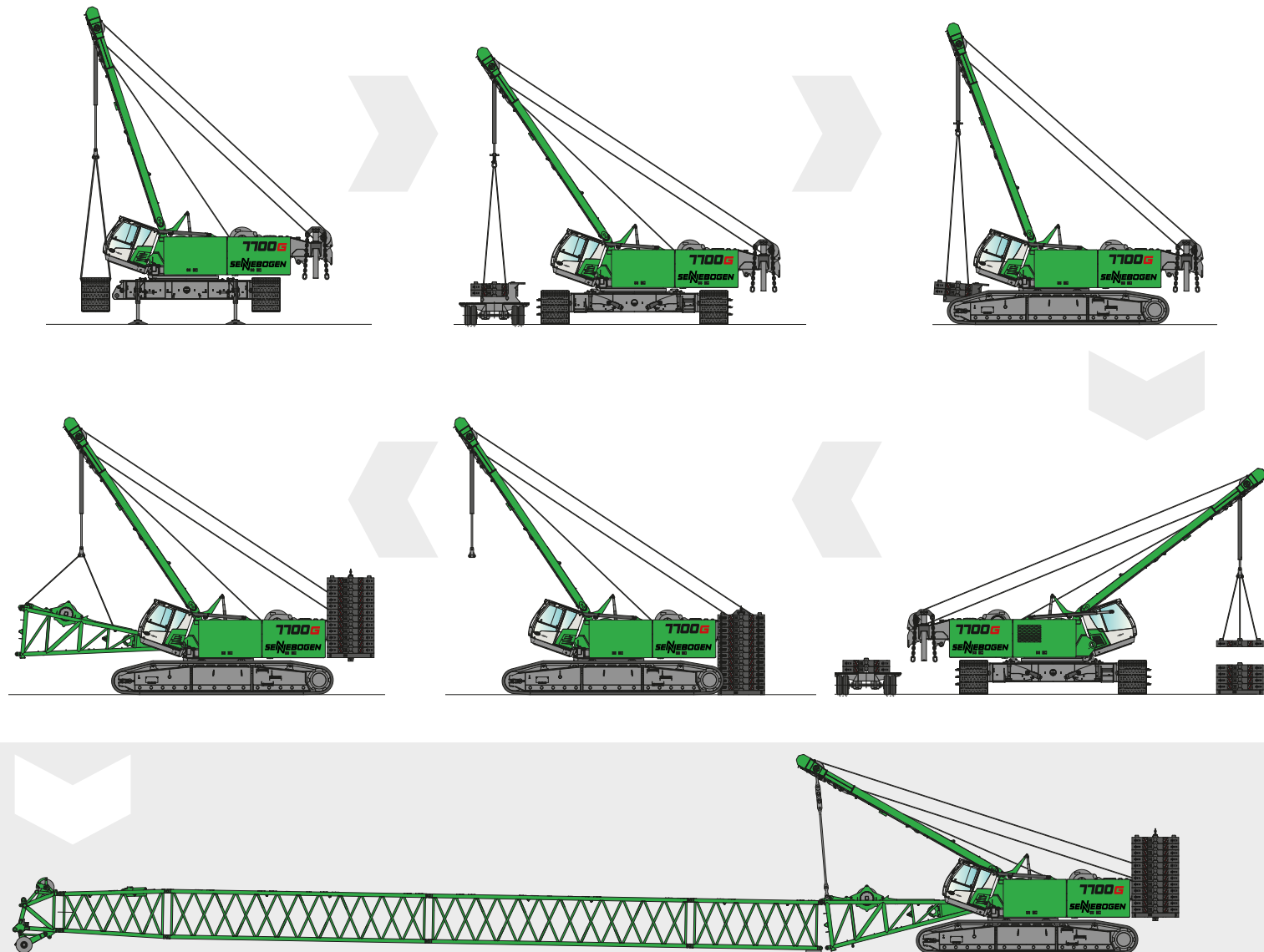
Thanks to the self-loading and self-assembly systems.



# 02 ASSEMBLE WITHOUT ADDITIONAL EQUIPMENT AND WITH LESS PERSONNEL

## TIME AND COST EFFICIENT

- Assembled on site in just a few steps, thanks to the innovative self-assembly system without the need for additional equipment.



# 03 ROBUST: SAFE LIFTING ON INCLINES

## FLEXIBLE WORKING ON ANY TERRAIN

- Always ready for work: even on uneven construction sites, work on inclines with the 2° and 4° load charts
- Due to the robust design the crawler cranes are suitable for use on uneven terrain and offshore


Incline of up to **4°**



# 04 FLEXIBLE: MOVE LOADS HORIZONTALLY & VERTICALLY

## MAXIMUM OFF-ROAD MOBILITY UNDER LOAD

- With the crawler tracks' large contact area
- Low ground pressure with high stability
- Powerful chassis moves the crane safely and reliably across the toughest terrain – even with a load on the hook



**95 t**  
at 10 m\*

# 05 MAINTENANCE AND SERVICE MADE EASY



## KEEP IT SIMPLE. TECHNOLOGY THAT CAN BE MASTERED.

All service points are clearly arranged and easily accessible.  
The SENCON control system supports you with diagnostics.  
So your machine is back in action more quickly.



Reliable and  
practical technology

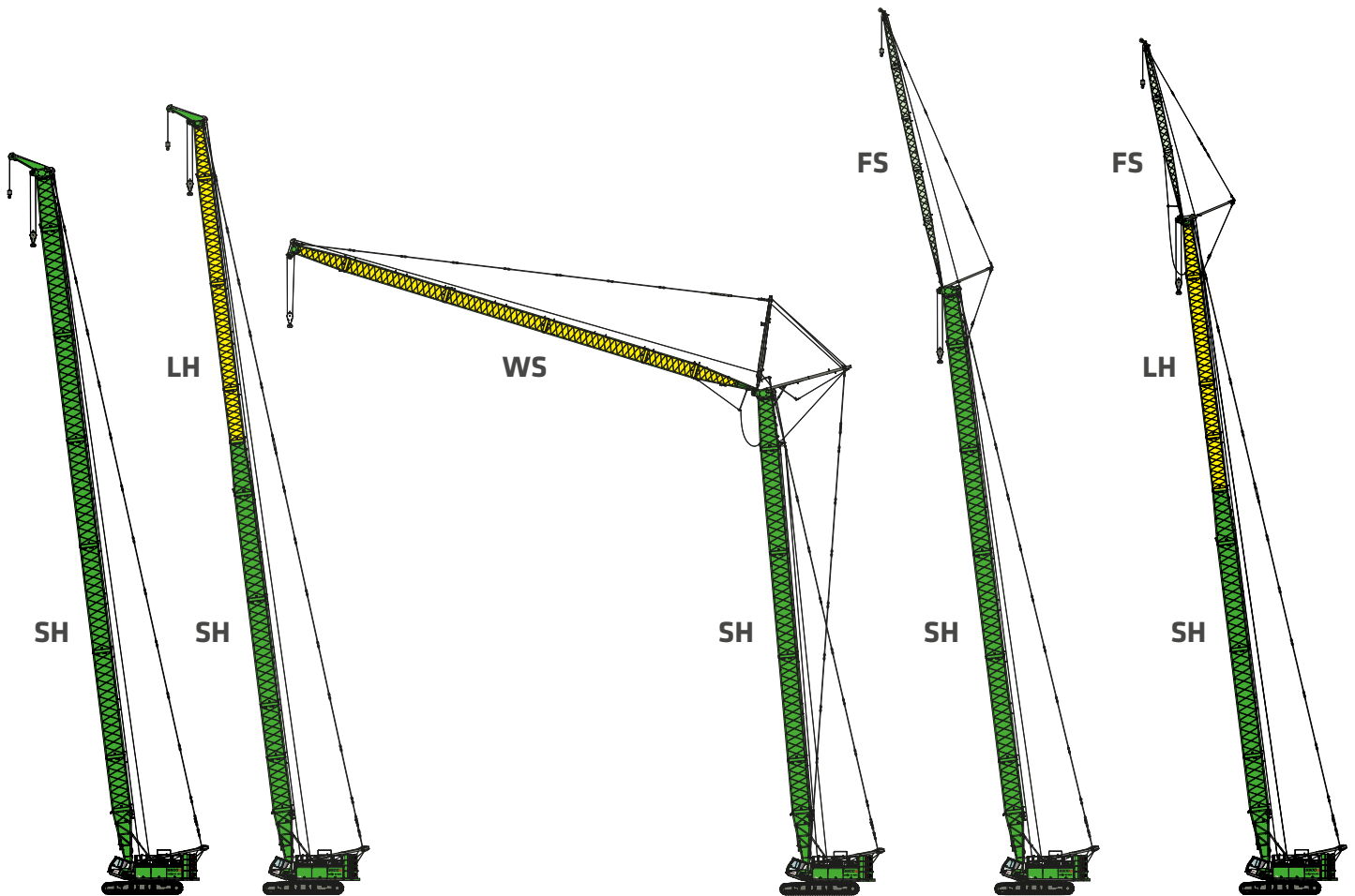


Stay independent and easily  
repair your machine yourself



A central electrical distribution  
board and electronic modules  
simplify maintenance

# 06 MODULAR DESIGN: VERSATILE SOLUTIONS



**SH:** heavy main boom   **LH:** light main boom   **WS:** luffing jib   **FS:** fixed fly jib

## SPECIAL REQUIREMENTS? WE HAVE THE SOLUTION.

With the tried-and-tested SENNEBOGEN modular system, we create the machine that suits you best – perfectly tailored to your application.

# 07 BETTER SAFETY. MAXIMUM COMFORT.



## Everything in view

Excellent all-round and upward view thanks to large window panes, optionally with FOPS guard and bullet proof glass. The optionally available cab tilt of up to 20° enables direct eye contact with the load.

## Intuitive controls

The intuitive **SENCON** control system shows all relevant information and possibilities for action and thus actively supports you in your work with the machine.

## For your health

The back-friendly comfort seat, adjustable armrests, joysticks that sit comfortably in the hand, and the optimally arranged controls make daily work as easy as possible.

## Pleasant indoor climate

The automatic heating/air conditioning with optimum air flow guarantees a pleasant indoor climate all year round. Noise reduction through sound-absorbing materials and design solutions.



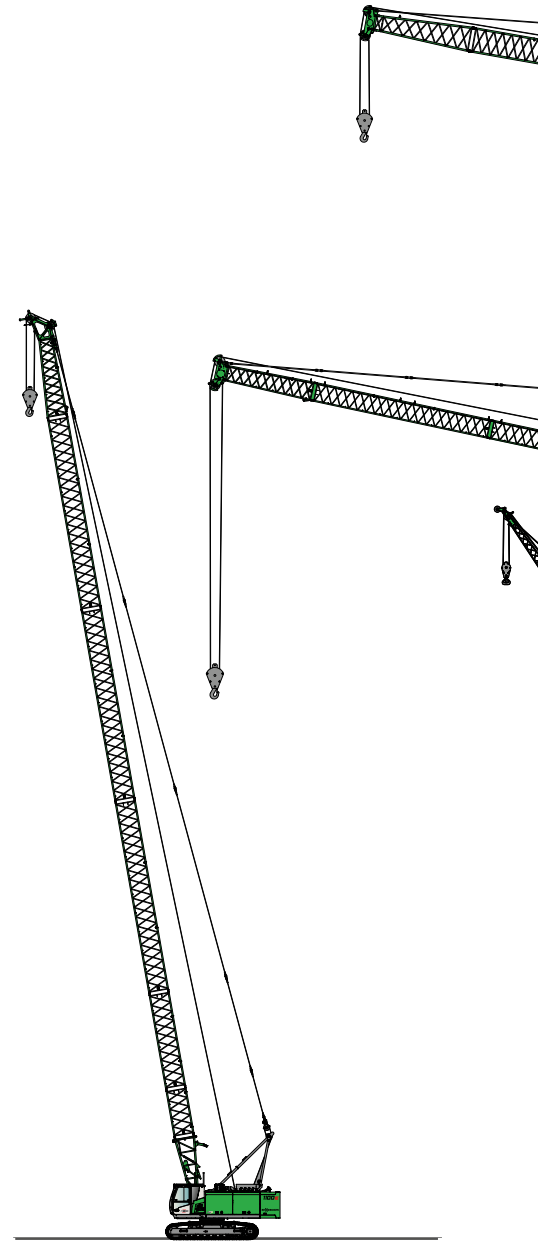


# BIG RANGE OF PRODUCTS. EXCELLENT RANGE OF SIZES.







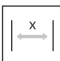
“SENNEBOGEN cranes are characterized above all by their extreme robustness, outstanding reliability and manageable electrics/electronics in line with the motto ‘Keep it simple’”.

DIRK BRACHT, Managing Director  
Franz Bracht Kranvermietung GmbH



**1100G**

**50 t**

	<b>Load capacity</b>	<b>50 t</b>
	<b>Main boom</b>	
	Max. Main boom length	52.3 m
	<b>Diesel engine</b>	
		129 kW
	<b>Winches</b>	
	Cable pull 1st position	120 kN
	Cable diameter	22 mm
	Cable speed	125 m/min
	<b>Dimensions</b>	
	Transport weight	50 t
	Transport width	3,000 mm
	Transport height	3,324 mm



**2200G**

**4400G**

**5500G**

**7700G**

80 t

130 t

180 t / 200 t

300 t

12.1 m - 59.7 m

13.1 m - 69.1 m

13.1 m - 74.7 m

18.7 m - 91.5 m

186 kW

186 kW

261 kW

321 kW

120 kN

160 kN

160 kN

220 kN

22 mm

26 mm

26 mm

28 mm

125 m/min

105 m/min

105 m/min

140 m/min

42.8 t

35.2t

36.1 t

55 t

3,500 mm

3,000 mm

3,000 mm

3,000 mm

3,000 mm

3,245 mm

3,200 mm

3,100 mm

# 50 t CRAWLER CRANE



50 t load capacity



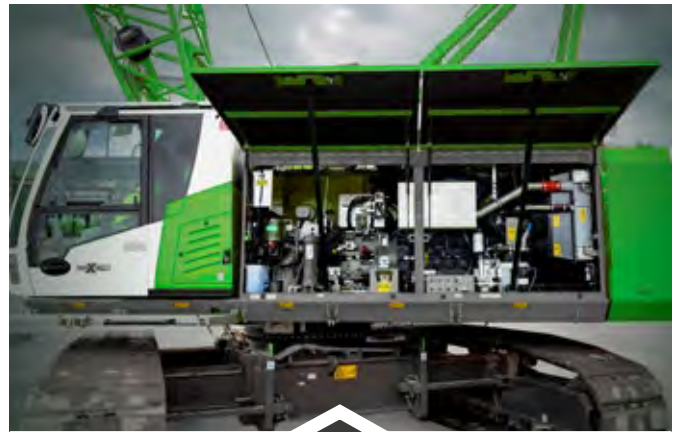
129 kW diesel engine



51 m hook height



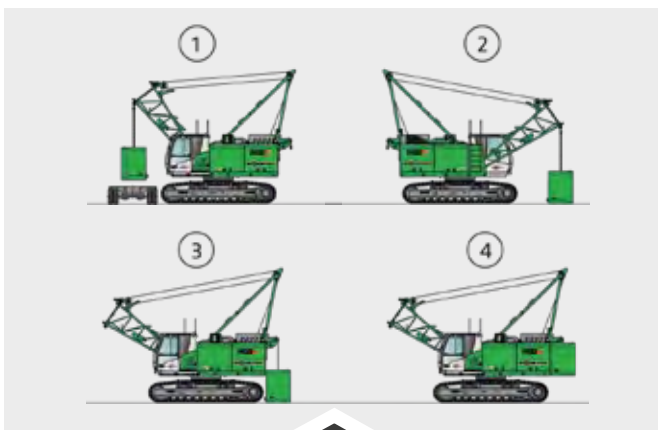
120 kN winch



## EFFICIENT PARTNER

- ✓ Compact dimensions
- ✓ Pick & Carry capability
- ✓ Powerful: high load capacities and winch traction

## BENEFITS



## EASY TO TRANSPORT

- ✓ Base machine has 3 m transport width, 30 t transport weight
- ✓ Quick set-up thanks to self-assembly system

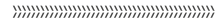


## MAXIMUM SAFETY

- ✓ Safe use with up to 100% load capacity, even in Pick & Carry mode
- ✓ Sensitive controls
- ✓ Operates on inclines of up to 4°



## OPTIONS



*rigid cab elevation*



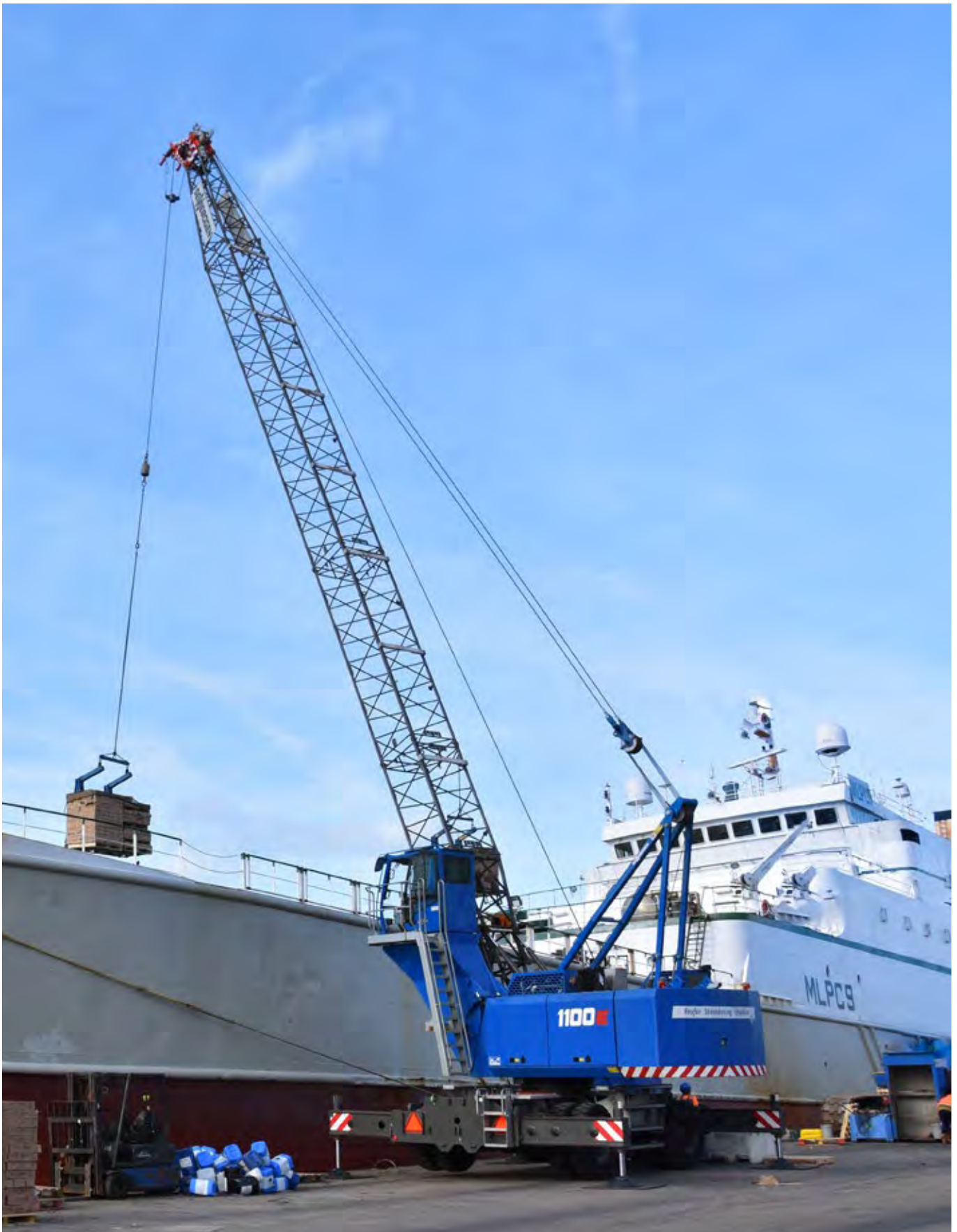
*8.5 t auxiliary jib*



*18 m fixed fly jib*



Pick and Carry operation; Italy



Ship unloading with rigid cab elevation and mobile undercarriage; Netherlands



Prefabricated component assembly; Netherlands



Loading roof trusses; Germany





Dismantling sheet piles; Italy

# 80 t CRAWLER CRANE



80 t load capacity



186 kW diesel engine



59.7 m hook height



120 kN winch



## FLEXIBLE ALL-ROUNDER

- ✔ Lifts up to 80 t
- ✔ All-rounder: lifting, transport and assembly tasks
- ✔ Works with vibratory compaction equipment as well as on a pontoon

## BENEFITS



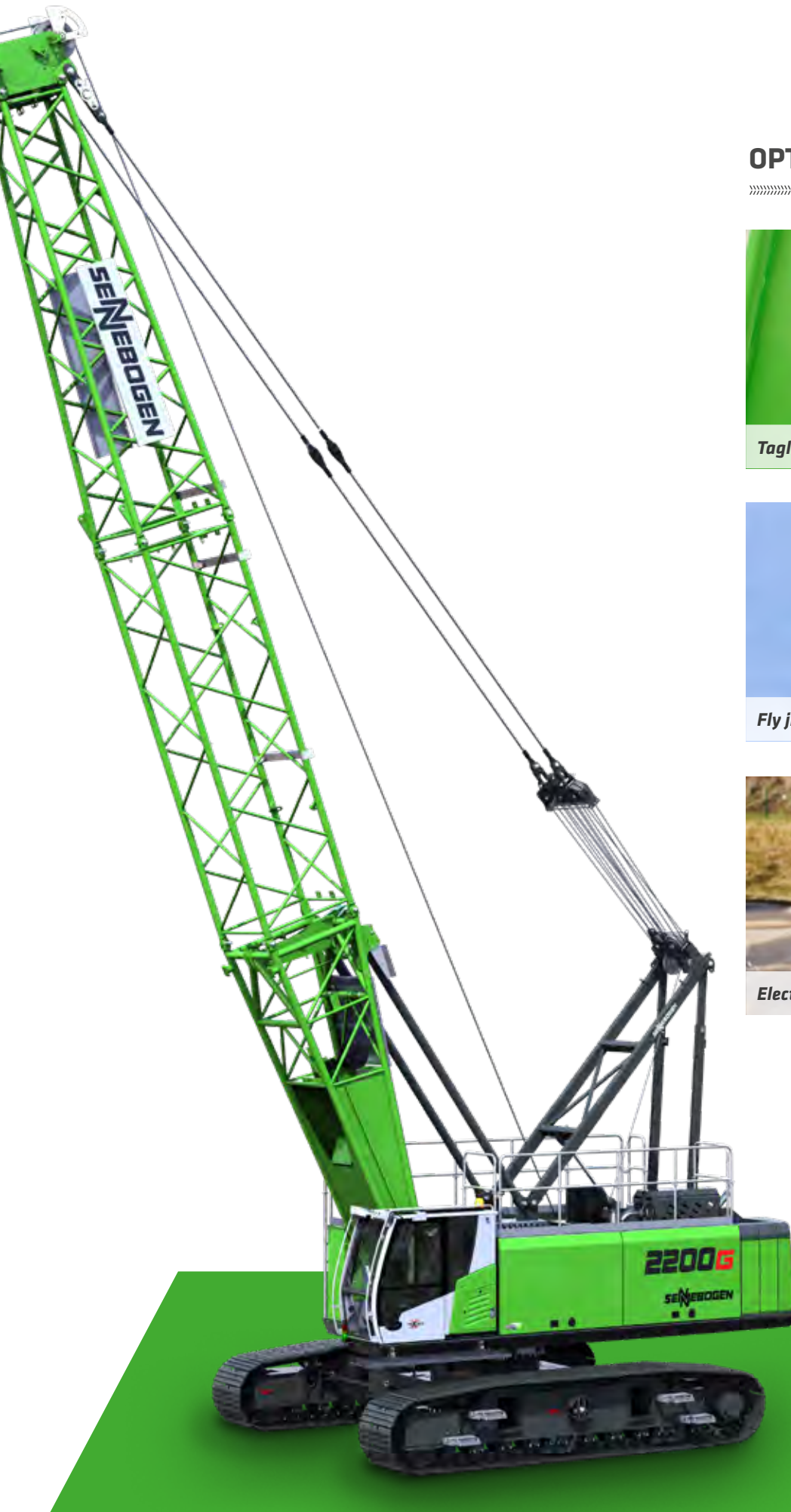
## SENSITIVE AND SAFE

- ✔ Assembly tasks with millimeter precision
- ✔ Pick and Carry tasks
- ✔ Telescopic undercarriage:  
5 m stabilizing width

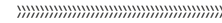


## EFFECTIVE

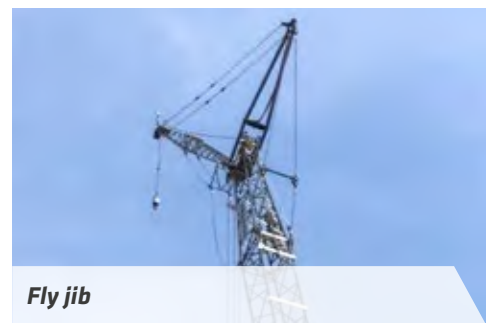
- ✔ Powerful engine
- ✔ 120 kN winch tensile force and  
125 m/min cable speed
- ✔ Easy to transport



## OPTIONS



Tagline winch



Fly jib



Electronic winch monitoring



Hydraulic engineering; Netherlands



Structural engineering; Singapore



Bridge construction; Algeria

# 130 t CRAWLER CRANE



130 t load capacity



186 kW diesel engine



93 m hook height



160 kN winch



## LONG-LASTING & VALUABLE

- High availability and reliability: particularly appreciated in the crane rental sector
- Robust design and easy maintenance

## BENEFITS



## VERSATILITY

- Flexible lifting and loading work
- Variable lattice boom lengths up to 93 m
- Pick & Carry on the construction site



## POWER PACK

- High-performance 186 kW diesel engine
- Telescopic crawler undercarriage
- Cable speeds of up to 105 m/min. with two 160 kN winches

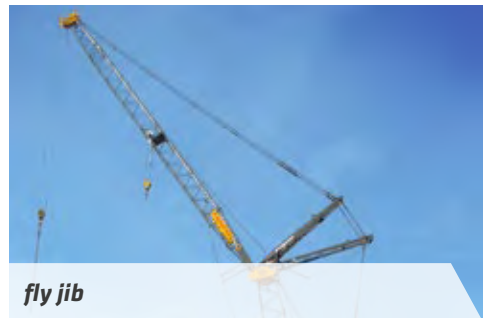
## OPTIONS



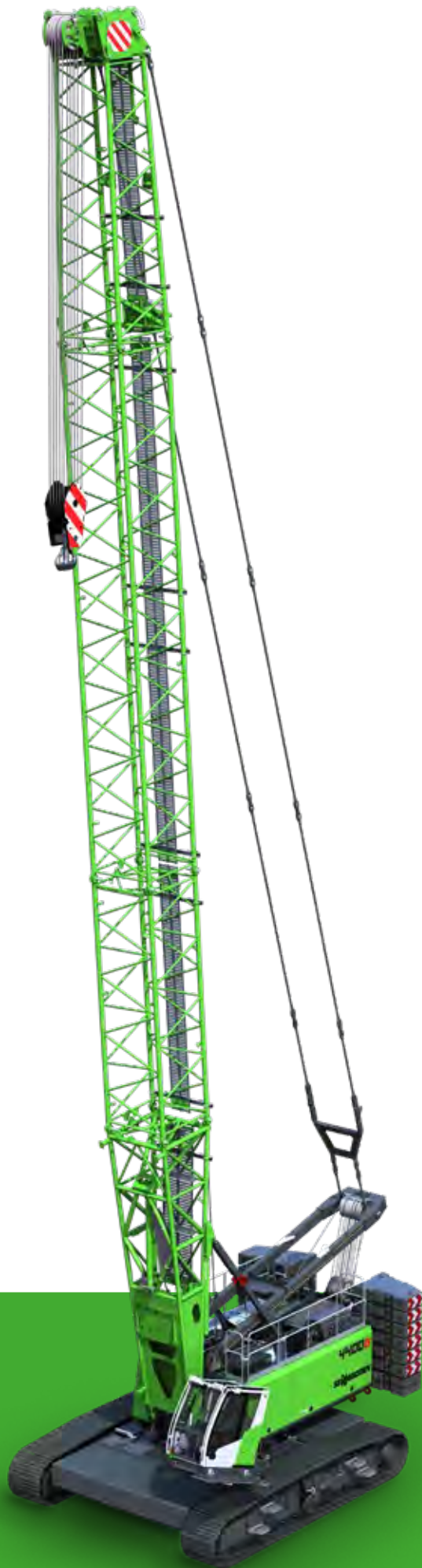
*hydraulically elevating cab*



*tiltable cab*



*fly jib*





Building construction; Germany





Prefabricated component assembly; Germany



Wind turbine installation; Germany

# 180/200 t CRAWLER CRANE



180/200 t load capacity



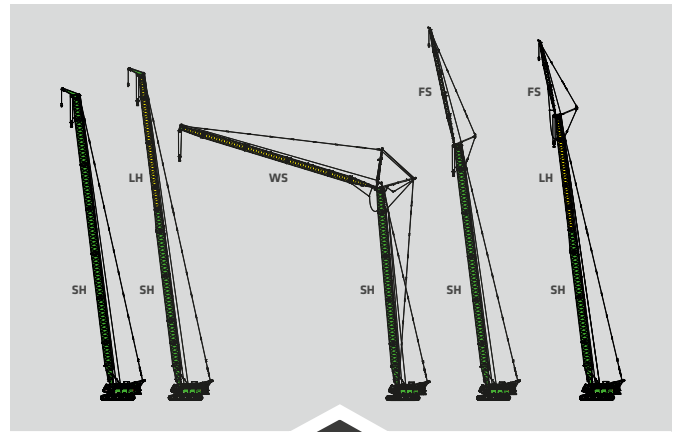
283 kW diesel engine



104 m hook height



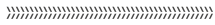
160 kN winch



## VERSATILE CONFIGURATION

- Wide range of uses thanks to large selection of boom configurations and modular ballast system
- Available with 180 t or 200 t max. load capacity

## BENEFITS



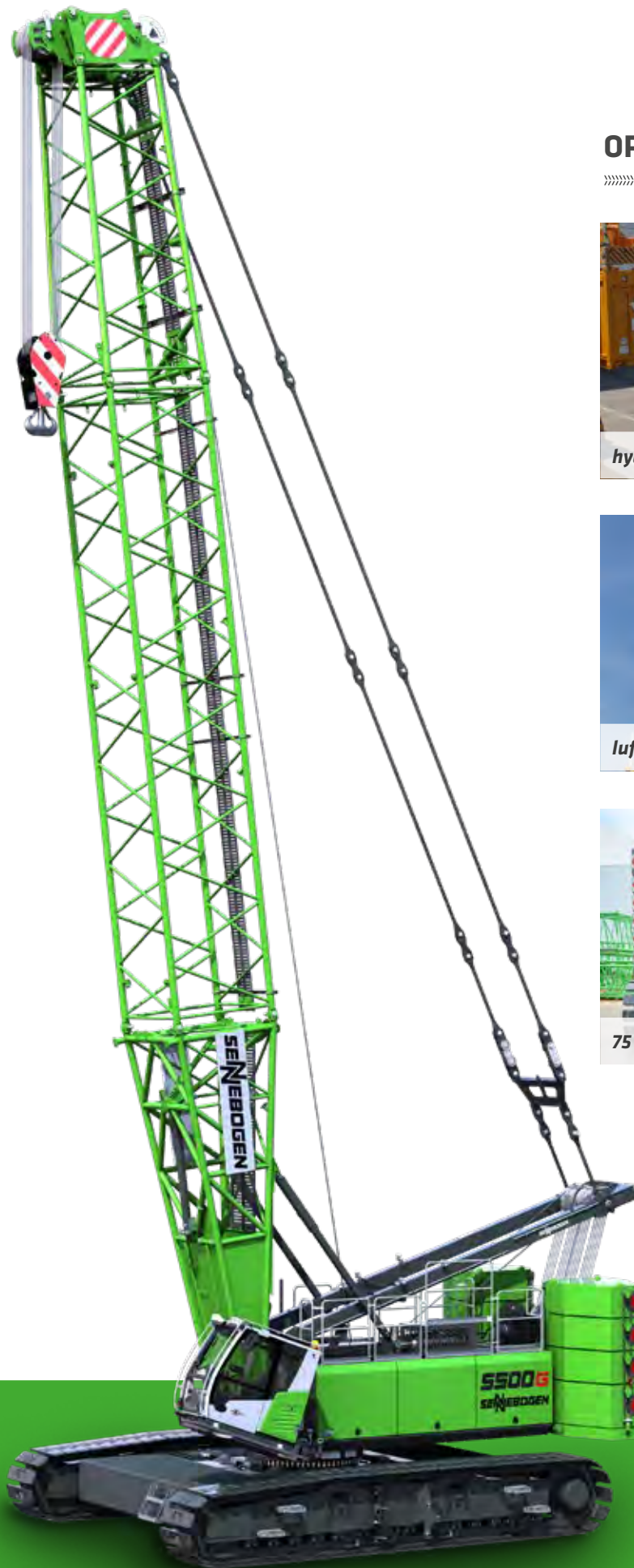
## IDEAL OVERVIEW AND SAFETY

- The robust Star-Lifter undercarriage gives the crane a secure footing
- Can travel under load
- Everything in view – cab can optionally be tilted and/or elevated

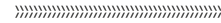


## QUICK ASSEMBLY

- Assembly in just a few steps thanks to the self-assembly system
- No need for additional equipment
- Ballast storage device via hydraulic cylinder as standard



## OPTIONS



*hydraulically elevating cab*



*luffing jib*



*75 t rear ballast for 200 t load capacity*



Hydraulic engineering; Belgium



Bridge construction; Kosovo



Prefabricated component assembly; Germany



Lifting a cross bar; Hungary



Port logistics; Netherlands



Sensitive lifting of large components; Germany

# 300 t CRAWLER CRANE



300 t load capacity



321 kW diesel engine



154 m hook height



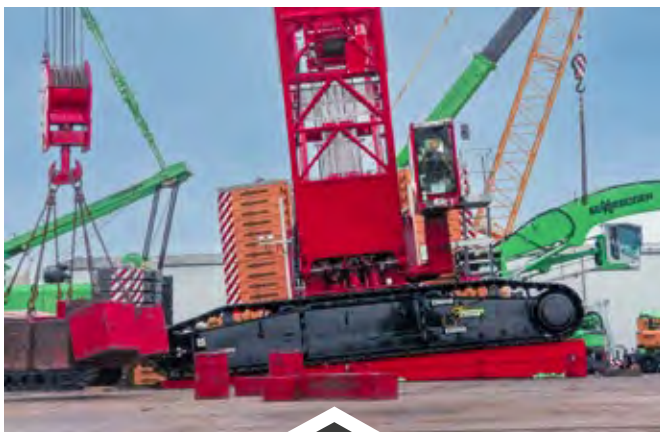
200 kN winch



## EASY TO TRANSPORT

- Telescopic Star-Lifter undercarriage – 3 m transport width
- All components optimized for container transport
- Self-assembly system

## BENEFITS



## OUTSTANDING STABILITY IN AN INCLINED POSITION

- Operates on inclines of up to 4°
- Extremely robust boom design
- Stabilizer width 8.3 m



## INDIVIDUAL PROJECT PLANNING IN LINE WITH CUSTOMER REQUIREMENTS

- For demanding offshore applications
- Use with a leader attachment for civil engineering work

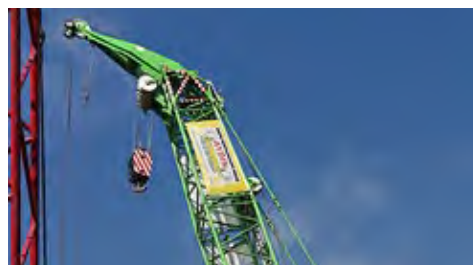




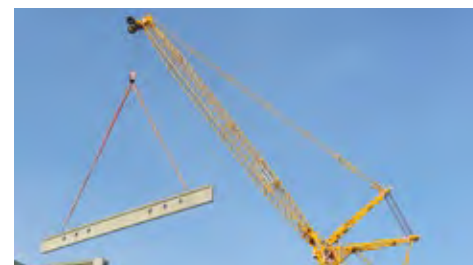
## OPTIONS



*rigid cab elevation*



*auxiliary jib*



*luffing jib*



Service crane; France



Bridge construction; Russia



High stability in demanding offshore applications; Netherlands



Ground compaction; Netherlands



Offshore operations; Netherlands

# FAMILY BUSINESS

WITH DECADES OF EXPERIENCE –  
YOU CAN RELY ON OUR TECHNICAL SOLUTIONS.

Since 1952, we stand for customer-specific mechanical engineering and have successfully established ourselves as market leader in many industries of crane technology and demanding material handling worldwide.



FAMILY SENNEBOGEN: ERICH, SEBASTIAN, ANTON,  
VICTORIA, ALEXANDER, WALTER (from left to right)



MANAGEMENT BOARD: ALFRED ENDL, THORSTEN RESCH, WALTER SENNEBOGEN, ERICH SENNEBOGEN, ANTON SENNEBOGEN, DR. ANDREAS MAURER (from left to right)

# WE STAND FOR

## /// STABILITY & RELIABILITY

Our stable and continuous development leads to the highest level of reliability and performance.

## /// ORGANIC GROWTH AND INDEPENDENCE

For us this means future focus; for our partners and customers it brings long-term stability and security.

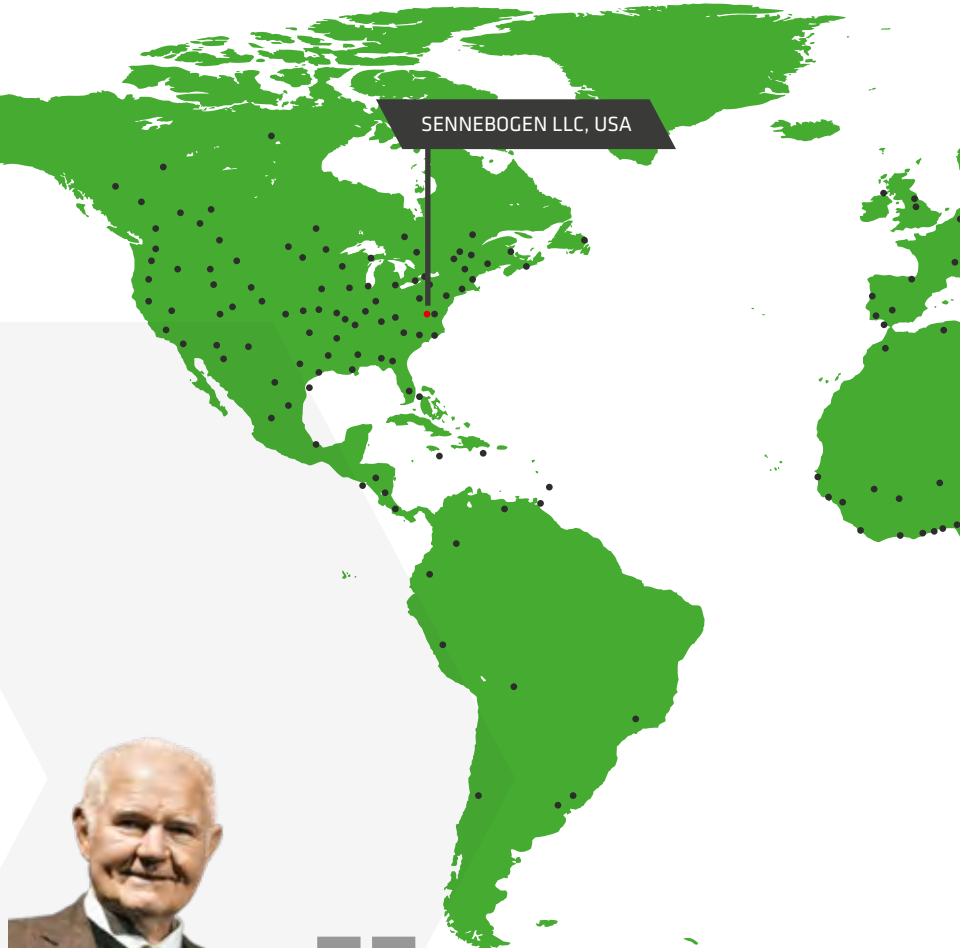
## /// A STRONG HERITAGE SECURES THE FUTURE

SENNEBOGEN has become one of the leading manufacturers in the market. Continuous investments in our companies secure the advantage.

## /// PROXIMITY TO OUR PARTNERS

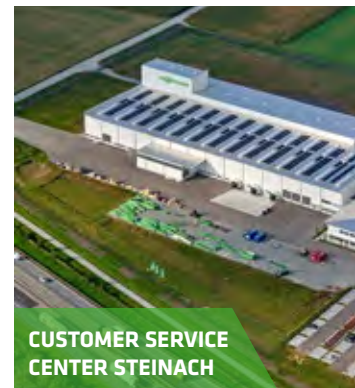
The personal contact with our customers, distributors, suppliers or employees supports us in becoming better every day.

# WORLDWIDE CUSTOMER FOCUS.



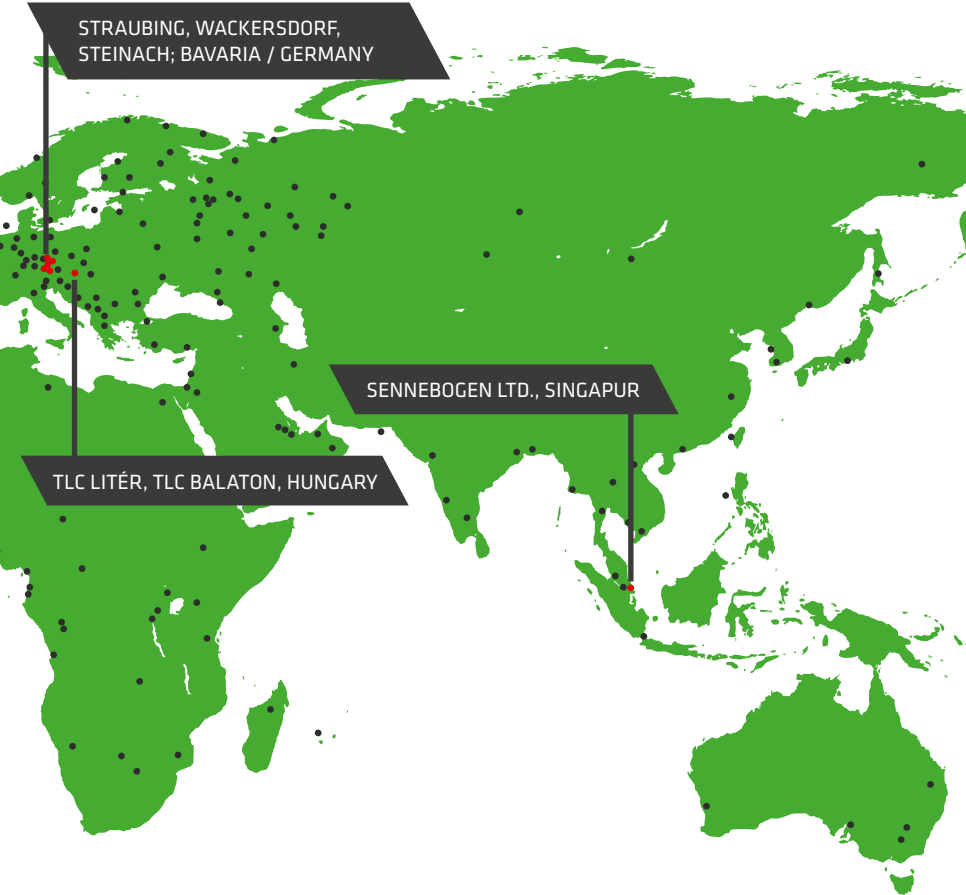
“  
If you don't change anything,  
you will not improve anything.”

Erich Sennebogen, 1931 - 2011  
Founder





- Locations and branches
- Sales and service partners



REPRESENTED WORLDWIDE  
WITH OUR LOCATIONS AND  
SALES PARTNERS.



# CUSTOMER SERVICE WORLDWIDE



✓ We support you with any questions online, by phone and on site with our worldwide network.

✓ Our extended warranty packages offer you even more security and service.

## SPARE PARTS: GO FOR QUALITY



**Excellent delivery performance** - also in urgent cases



**Supply of spare parts** to all continents through our global network



**Automated warehouse technology** for more than 30 000 items in stock



**Lower service costs** with the use of high-quality SENNEBOGEN spare parts

**SENNEBOGEN** rental

## RENT MACHINES FLEXIBLY

Our rental park enables you to rent machines on a medium or long-term basis:

- ✓ for specific projects
- ✓ to fill short-term gaps in your machine park
- ✓ ensure the continued flow of goods

➔ [rental.sennebogen.com](https://rental.sennebogen.com)



**SENNEBOGEN** used

## USED MACHINES WITH HIGH QUALITY

Used machines have lower investment costs and still offer a high quality and durability! Find your used machine at SENNEBOGEN used!

➔ [used.sennebogen.com](https://used.sennebogen.com)

# SENNEBOGEN ACADEMY

Expansive in knowledge, because success is based on knowledge. At the SENNEBOGEN Academy we place great importance on ensuring it flows powerfully.

➔ [www.sennebogen-academy.com](http://www.sennebogen-academy.com)



## TARGET GROUP ORIENTED TRAINING

for our dealers and customers.



## 15000 m<sup>2</sup> OUTDOOR DEMONSTRATION AREA

combines theory and practice in our training courses optimally.



## TRAINING CREATES AN ADVANTAGE

we offer a wide range of trainings from basic training to product expert trainings.



## OPTIMAL KNOWLEDGE TRANSFER

Through trainings for service and sales partners we ensure the continuous operation of our machines worldwide.



## FLEET MANAGEMENT FOR PROFESSIONALS

### 1. REDUCE SERVICE COSTS

Monitor the machine and its main operating parameters (temperatures, consumption). If key figures deviate significantly from the target value, the user is informed immediately.

### 2. REDUCE CONSUMPTION

Easily identify and optimize idle times or change set parameters when machines are underloaded to reduce consumption.

### 3. IMPROVE PRODUCTIVITY

With just a few clicks, you can identify and optimize machine capacity, analyze routes and thus make your processes more profitable.

### 4. SAFEGUARD YOUR INVESTMENT

Alarm messages inform you about critical machine conditions. In the event of irregular movements, the machine can also easily be deactivated remotely.

 [www.sennebogen.com/sentrack](http://www.sennebogen.com/sentrack)



# SENNEBOGEN IN FIGURES.



**1800+**

Employees worldwide



**180+**

Sales and service  
partners worldwide



**100+**

Countries worldwide  
which we export to



**70+**

Years of experience

## JOIN OUR OPERATORS' CLUB

Exclusive information, sharing experience with other SENNEBOGEN operators as well as fun and enthusiasm. All the benefits here:

➔ [www.sennebogen.com/operators-club](http://www.sennebogen.com/operators-club)



# MOVE BIG THINGS WITH US



**BIG RANGE OF PRODUCTS.  
EXCELLENT RANGE OF SIZES.**



**Telehandler**  
**4-5.5 t**

**Balancer**  
**130-300 t**

**Material handler**  
**17-420 t**

**Duty cycle crane**  
**13.5-300 t**

**Crawler crane**  
**50-300 t**

**Telescopic crane**  
**16-130 t**

**Port crane**  
**300 t**

This catalog describes machine models, the scope of equipment of individual models, and configuration options (standard equipment and optional equipment) of the machines delivered by SENNEBOGEN Maschinenfabrik GmbH. Machine illustrations may contain optional and supplementary equipment. Actual equipment may vary depending on the country to which the machines are delivered, especially in regard to standard and optional equipment. All product designations used may be trademarks of SENNEBOGEN Maschinenfabrik GmbH or other supplying companies, and any use by third parties for their own purposes may violate the rights of the owners.

Please contact your local SENNEBOGEN sales partner for information concerning the equipment variants offered. Requested performance characteristics are only binding if they are expressly stipulated upon conclusion of the contract. Delivery options and technical features are subject to change. All information is supplied without liability. Equipment is subject to change, and rights of advancement are reserved. © SENNEBOGEN Maschinenfabrik GmbH, Straubing, Germany. Reproduction in whole or in part only with written consent of SENNEBOGEN Maschinenfabrik GmbH, Straubing, Germany.

**SENNEBOGEN**

**SENNEBOGEN  
Maschinenfabrik GmbH**  
Hebbelstraße 30  
94315 Straubing, Germany  
Tel. +49 94 21 540-0

 [www.sennebogen.com](http://www.sennebogen.com)

**SENNEBOGEN LLC**  
1957 Sennebogen Trail  
Stanley, North Carolina 28164, USA  
Tel. +1 704 347-4910  
sales@sennebogenllc.com  
www.sennebogen-na.com

**SENNEBOGEN Pte. Ltd.**  
25 International Business Park  
# 04-11/12 German Centre  
Singapore 60 99 16  
Tel. +65 6562 826-0  
info@sennebogen.asia  
www.sennebogen.asia

**MOVE BIG THINGS**